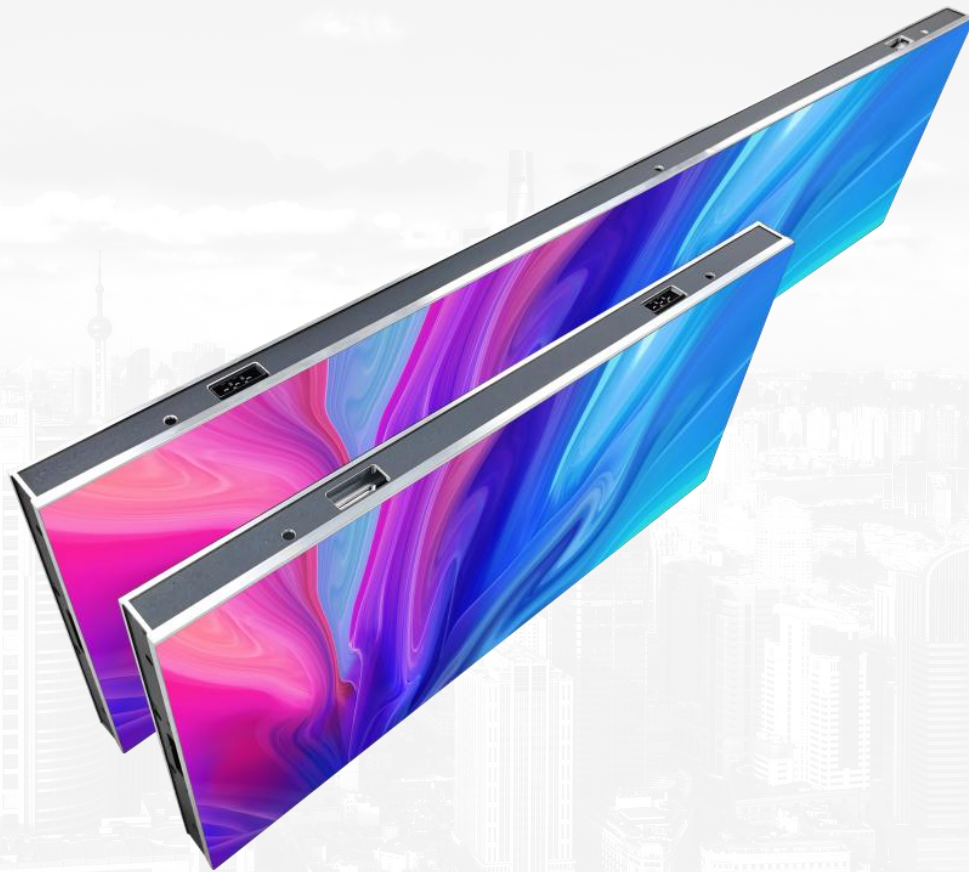




INFCOLOR

**IFS 1000X250
Ultra-Thin Series**

Product Brochure



500X250X33mm



750X250X33mm



1000X250X33mm



Rear view

Side view

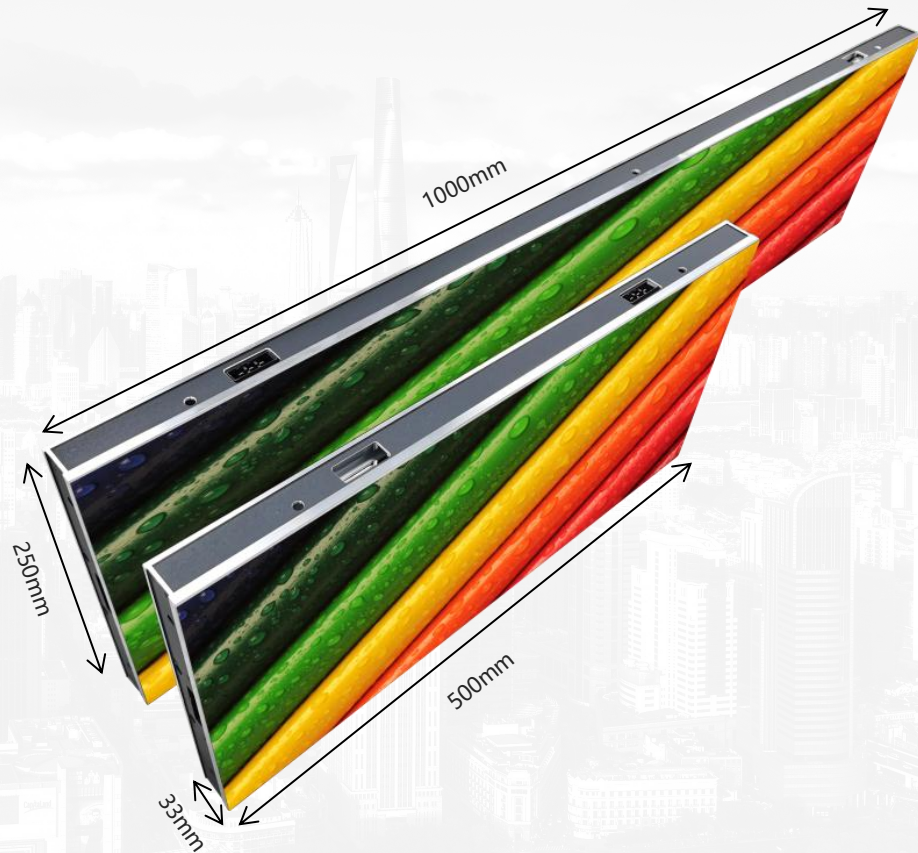
Front view

Cabinet Dimension

1000X250X33mm
750X250X33mm
500X250X33mm

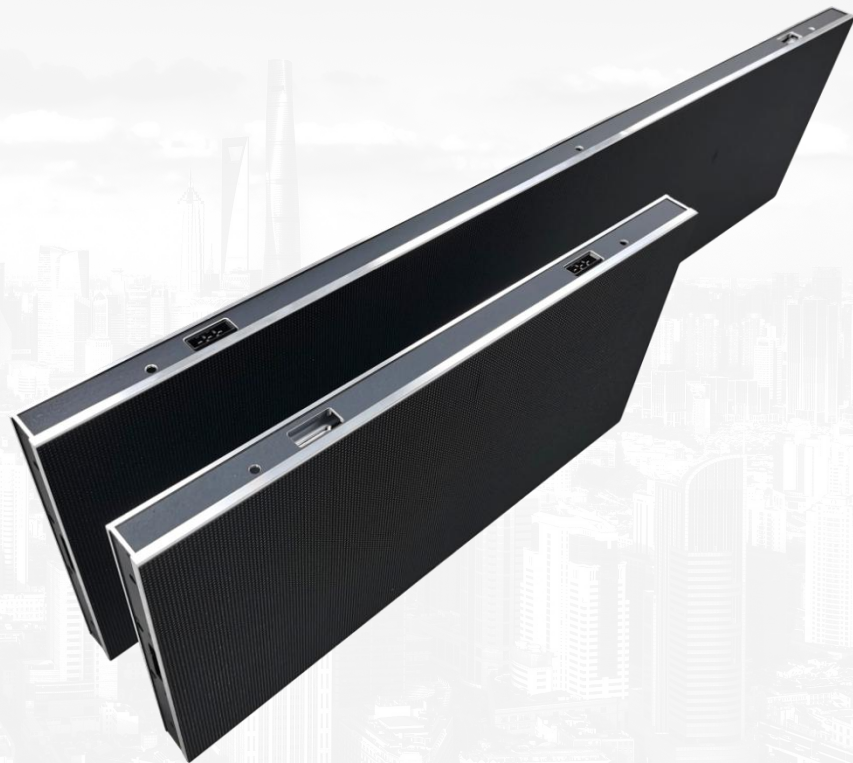
Light Weight

5.8kg/4.4kg/2.9kg



6S

- ◎ Save space
- ◎ Save installation
- ◎ Save structure
- ◎ Save transportation
- ◎ Save cost
- ◎ Save maintenance



Structure

- ◎ Aluminum material frame
- ◎ High precision, high strength
- ◎ Perfect heat dissipation
- ◎ 33mm thickness



Update



Front access service



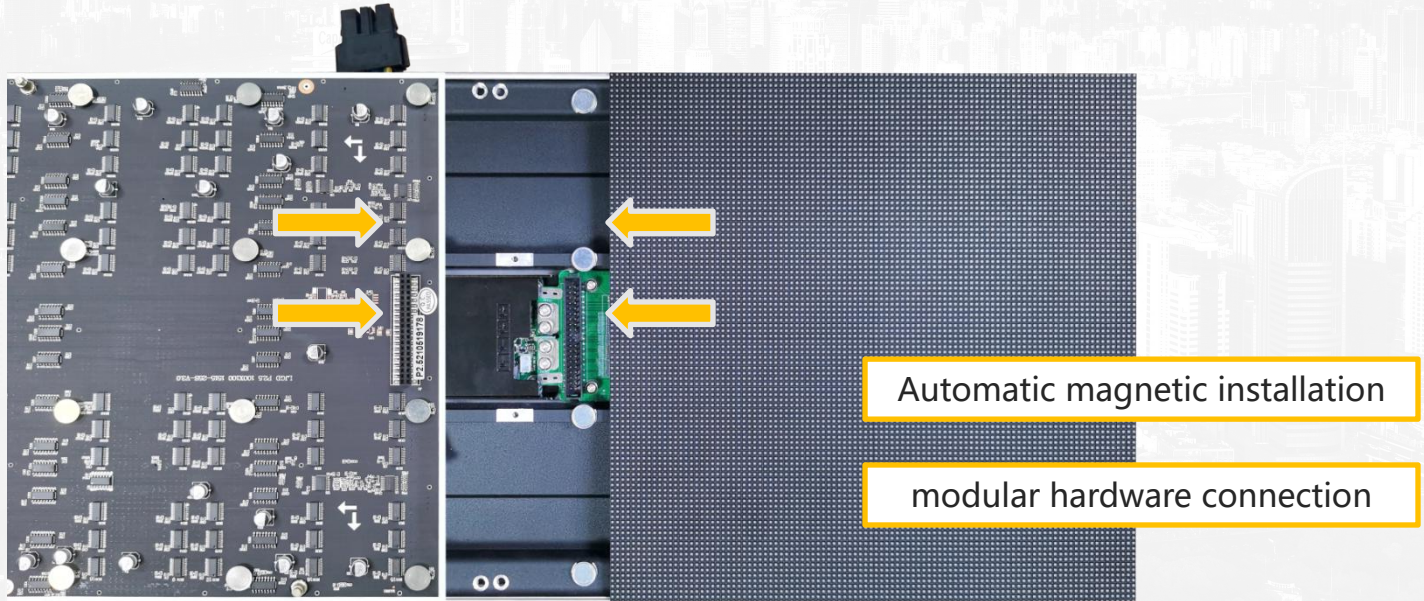
Safety connection



Power connector

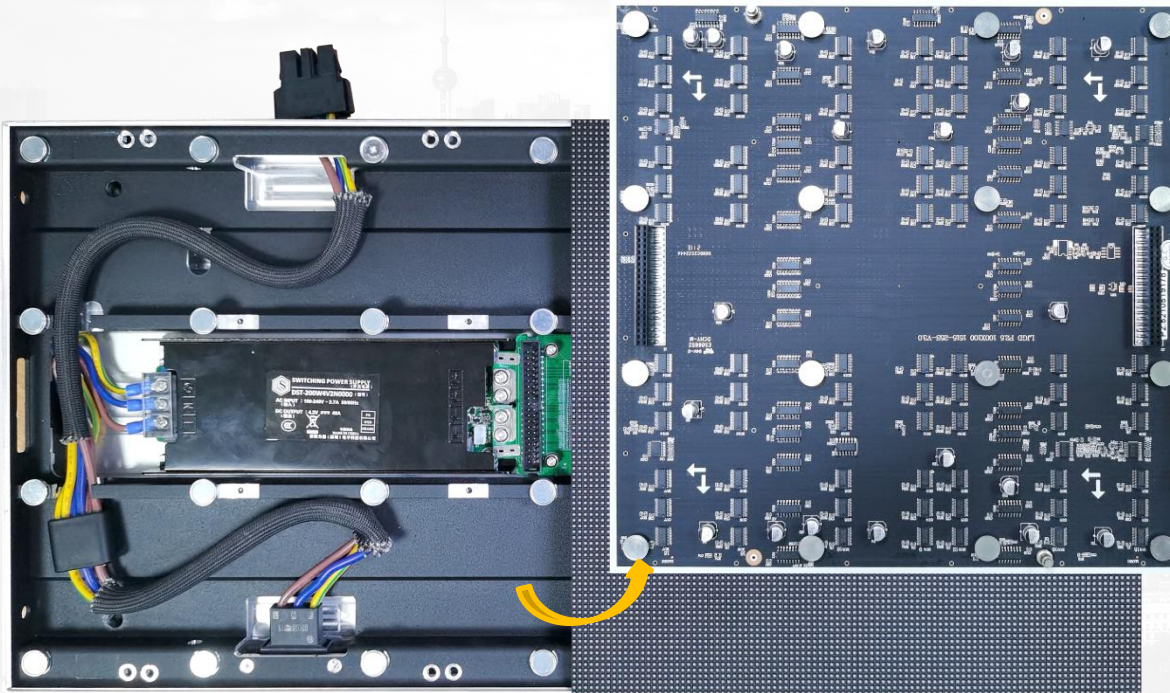
Hot swapping • wireless connection

- Modules adopt HUB connection, safer signal transmission.
- The hot swapping technology is a key point that achieves the continuous operation and uninterrupted maintenance.



- Ultra-thin thickness, but roomy interior.
- Standardized design, extensive applications.

Tidiness



Simpleness



Visual Effect



High refresh rate

Low refresh rate



Applications

An aerial view of a city skyline, likely Hong Kong, with numerous skyscrapers and buildings. A yellow rounded rectangle is overlaid in the center of the image, containing the INFCOLOR logo.

INFCOLOR

Thank you